

IL 2X

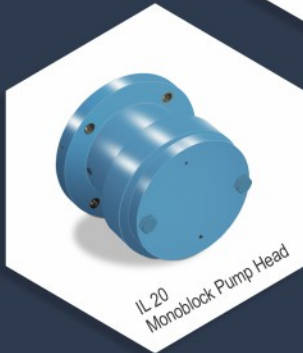
Internal Lobe Pumps
Trochoidal Gear Pumps
Monoblock Gear Pumps

Ex-stock

PUMP



IL 26
Monoblock Pump Head



IL 20
Monoblock Pump Head



IL 20 Monoblock Pump
With Single Phase Motor



IL 25
Monoblock Pump Head



IL 25 Monoblock pump
With Three Phase Motor

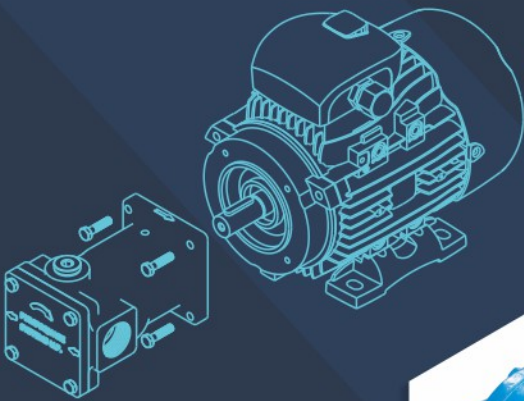


IL 21
Monoblock Pump Head



IL 21 Monoblock Pump
With Three Phase Motor

- No Base Plate & Coupling
- Fit & Forget Design
- Monoblock Pump Head



- Max Capacity: Up to 80 LPM
- Max Pressure: Up to 6 Bar
- Temperature: Up to 120 Degree C.
- Viscosity: 20 - 320 Cst.

PUMPSQUARE SYSTEMS LLP

info@pumpsquare.com | www.pumpsquare.com
Ph.: +91 2692 238677, Mobile : +91 80000 78677

Call +91-800-00 PUMPS or +91-800-00-78677 for Your Pumping Solution Requirements!!!

IL 2X series has been developed as a successor to the IL 1X Series Generation, but with a modular design for the most rugged application. The users have peace of mind to an extent that all the pain points like coupling, coupling guards, alignment and shaft runout is eliminated. Further, the evolution of design is such that the bearings don't come in contact with the liquid and if need arises for maintenance, the pumps need not be disturbed from the pipe lines. The working principle is simple. There are two pumping elements with gear in gear principle. As the shaft rotates, they mesh & un-mesh displacing the liquid axially through its pumping elements. Axial flow through elements ensures better suction, very low noise level and nearly pulsation free flow.

ADVANTAGE

- ◆ Just buy the pump head and easily fit it on your motor at your works.
- ◆ Monoblock Pump Head can be used across any type of motor & any brand motor as far as the Frame Size of the Motor remains same.
- ◆ With Built-In Relief Valve
- ◆ Improved Rotor Profiles for Smooth Meshing, minimizing internal losses and excellent suction capabilities.
- ◆ External bearing Design, Liquid doesn't come in contact with bearings.
- ◆ Low Power Consumption, Higher efficiency than traditional pumps.
- ◆ Eliminates the need of Mounting Frames & Coupling.
- ◆ Pump shaft is well supported on ball bearings to reduce the loads on the rotor as well as motor shaft.
- ◆ Hardened Shaft, Low Noise, no shaft run out, compact and light weight.
- ◆ Fit & Forget Design
- ◆ Reduced cost of your end product and monetary savings for you
- ◆ Value addition on your delivery of product as monoblock gear pumps with special motor ratings can be easily delivered

MOUNTING & EXECUTION

- ◆ Horizontal Face Mounted Pumps for Close Couple Design with the Prime Mover.
- ◆ Pump mounting flanges to Suit B14 Face of standard Frame IEC Motor
- ◆ Electrical Motor to be of Foot + Face (B3 + B14 = B34) Type.
- ◆ Horizontal & Vertical Mounting as per your selection

PRIME MOVER

- ◆ Three Phase AC Motor
- ◆ Single Phase AC Motor

APPLICATION

- ◆ Unloading, Loading & Transfer of all types of Oils
- ◆ Circulation & Forced Lubrication in your Machines & Equipments
- ◆ As Filtration Pumps and Fuel Injection Pumps
- ◆ In Hydraulic Power Packs
- ◆ For all Low Pressure – Continuous & Intermediate Duty Applications.

TYPICAL LIQUID LIST

- ◆ All types of Lubricating, Gear Oil, Water Emulsions & Transformer Oils
- ◆ Hydraulic Oil, Coolant Oil, Neat Cutting Oil, Mineral Oil,
- ◆ Furnace Oil & Fuel Oils like HSD & LDO
- Any media having good lubricating properties

MATERIAL OF CONSTRUCTIONS (MOC)

Pump Housing & Covers: Cast Iron
 Rotor Set: Sintered Iron
 Shaft: Hardened Alloy Steel
 Relief Valve Parts: In Spring Steel & Cast Iron
 Shaft Sealing Type: Lip Seal (Mechanical Seal Optional)
 Sealing Kit Elastomers: Nitrile (Viton Optional)

Pump must be protected against solid particles in the fluid by suitable suction filters. Also, Running Dry or with Non-Lubricating Liquid will damage the pump.

PUMP PERFORMANCE TABLE

Pump Model	Port Size Inlet x Outlet (BSP)	Max Flow (LPM)	Max. Pressure (Kg/Cm ²)	Speed (RPM)	Power (HP)	Sealing	Compatible Motor Frame Size
IL-20	1/4" X 1/4"	3	6	1450	0.25	Lip Seal	FR 63
		5	6	1450	0.25	Lip Seal	
IL-21	1/2" X 1/2"	8	6	1450	0.5	Lip Seal	FR 71
		10	6	1450	0.5	Lip Seal	
IL-25	1" X 1"	15	6	1450	1	Lip Seal	FR 80
		20	6	1450	1	Lip Seal	
		25	6	1450	1	Lip Seal	
		30	6	1450	1	Lip Seal	
		35	6	1450	1	Lip Seal	
		40	6	1450	1	Lip Seal	
IL-26	1 1/2" X 1 1/2"	50	6	1450	2* / 3*	Lip Seal	FR 90 *
		60	6	1450	2* / 3*	Lip Seal	
		70	6	1450	2* / 3*	Lip Seal	FR 100 *
		80	6	1450	2* / 3*	Lip Seal	

Pump Data With 40 cSt Lube oil at 40deg C test standard as per (VDMA 24284 G.II CL. II) Pump Performance Table For IL-2x series

*Specity at the time of ordering

Your Nearest Contact / Stockist:

PUMPSQUARE SYSTEMS LLP
 Plot No. 1903, Phase-IV, GIDC Estate,
 Vithal Udhyog Nagar, Gujarat 388121 INDIA.
 Ph.: +91 2692 238677, +91 93272 64812 / 13
 info@pumpsquare.com | www.pumpsquare.com
 sales@pumpsquare.com | www.pdpumpindia.com

Authorised Dealer